



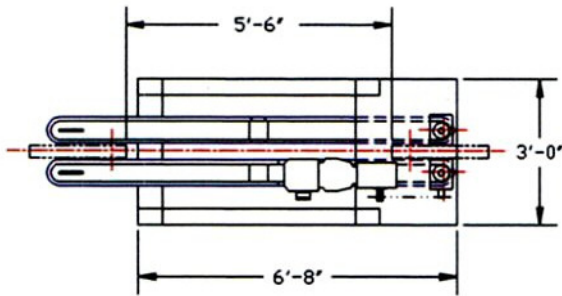
A VERSATILE UNIT, THE **MODEL 3500 SIDEGRIP ELEVATOR** HAS MANY USES. WHETHER ITS CANS, GLASS OR PLASTIC CONTAINERS, EITHER EMPTY OR FULL, THE UNIT WILL FULFILL ALMOST ANY REQUIREMENT, AT SPEEDS THAT CAN APPROACH 1200 CONTAINERS/MINUTE.

THE **MODEL 3500 SIDEGRIP ELEVATOR** HAS MANY FEATURES THAT PLACES IT ABOVE OTHER TYPES OF ELEVATORS. THE SIDEGRIP CHAIN HAS FOUR FDA APPROVED FEATHER TOUCH GRIP-PERS PER LINK, AND THE SIDES ARE QUICK ADJUSTABLE FOR VARIOUS PRODUCT SIZES. THE INFEED AND DISCHARGE SECTIONS HAVE TAPERED WEARSTRIPS TO HELP INSURE GENTLE PICKUP AND RELEASE OF THE PRODUCT. THE UNIT IS ALSO EQUIPPED WITH 6 INCH LONG PNEUMATICALLY CONTROLLED CHAIN TAKE UPS TO GIVE LONGER CHAIN LIFE AND MINIMAL MAINTENANCE. THE UNIT ALSO HAS AUTOMATIC CHAIN OILERS FOR REDUCED FRICTION AND LONGER CHAIN LIFE. THE WEARSTRIPS ARE MADE OF THREE QUARTER INCH THICK UHMW.

THE DRIVE TRAIN IS FURNISHED WITH A EURO-DRIVE VARIABLE SPEED MOTOR, TWO RIGHT ANGLE GEARBOXES WITH A MECHANICAL TORQUE LIMITER TO GIVE EXTRA PROTECTION TO THE CONVEYOR CHAIN AND AN ADDED SAFETY FACTOR.

OPTIONS FOR THE ELEVATOR INCLUDE ALL STAINLESS STEEL CONSTRUCTION, A CENTRALIZED GREASE LUBRICATION SYSTEM, AND ELECTRICAL CONTROLS, WHICH INCLUDE A NEMA STANDARDS CONTROL PANEL WITH ALLEN-BRADLEY COMPONENTS, ALL PRE-PIPED READY FOR OPERATION.

# MODEL 3500 SIDEGRIP ELEVATOR



## STANDARD SPECIFICATIONS:

**CONSTRUCTION:** THE UNIT CAN BE BUILT WITH EITHER PAINTED MILD STEEL OR SANITARY STYLE STAINLESS STEEL FORMED 7 GAGE FRAMEWORK. THE CONVEYOR BODY IS MADE OF FORMED 11 GAGE MILD OR STAINLESS STEEL.

**CONVEYOR CHAIN:** 3 1/4" WIDE 1873 CHAIN WITH WHITE PLASTIC FEATHER TOUCH FDA APPROVED WEDGE GRIPPERS WITH A NO. 60 ROLLER CHAIN BASE.

**WEAR STRIPS:** 3/4" THICK UHMW PLASTIC STRIPS.

**CHAIN TAKE UPS:** THE UNIT HAS A SLIDE YOKE MOUNTED IN EACH CONVEYOR BODY AND IS ACTIVATED BY A TWO INCH DIAMETER BY SIX INCH LONG AIR CYLINDER WITH A REGULATOR AND CHECK VALVE. THE PNEUMATIC TAKE UP INSURES UNIFORM TENSION ON THE CHAINS AND REDUCES MAINTENANCE.

**CHAIN OILERS:** DUAL GRAVITY FEED 8 OUNCE CAPACITY OILERS WITH DIRECT FEED TO THE INNER EDGES OF THE WEARSTRIPS.

**DRIVE PARTS:** 1 1/2 TO 3 HP EURODRIVE VARIABLE SPEED GEARMOTOR, LINKED WITH NO. 60 DRIVE PARTS AND A MECHANICAL TORQUE LIMITER TO TWO HUB CITY RIGHT ANGLE GEARBOXES WITH DOUBLE U-JOINT CONNECTED DRIVEN SHAFTS, WHICH SYNCHRONOUSLY DRIVE THE CHAINS.

**PRODUCT SIZE ADJUSTMENT:** THE CONVEYOR BODIES ARE ATTACHED TO PRECISION ACME THREADED SHAFTS, WHICH ARE CONNECTED BY NO. 40 CHAIN DRIVE PARTS WITH AN EASY ADJUSTING HANDWHEEL.

**OPTIONS:** THE ELEVATOR CAN BE FURNISHED WITH A CENTRALIZED GREASE LUBRICATION SYSTEM. ALSO AVAILABLE IS A CONTROL PANEL BUILT TO NEMA STANDARDS, WITH ALLEN-BRADLEY COMPONENTS, PRE-PIPED, TESTED AND READY FOR OPERATION.

