

## MODEL 2200 SPIRAL MASS CONVEYER

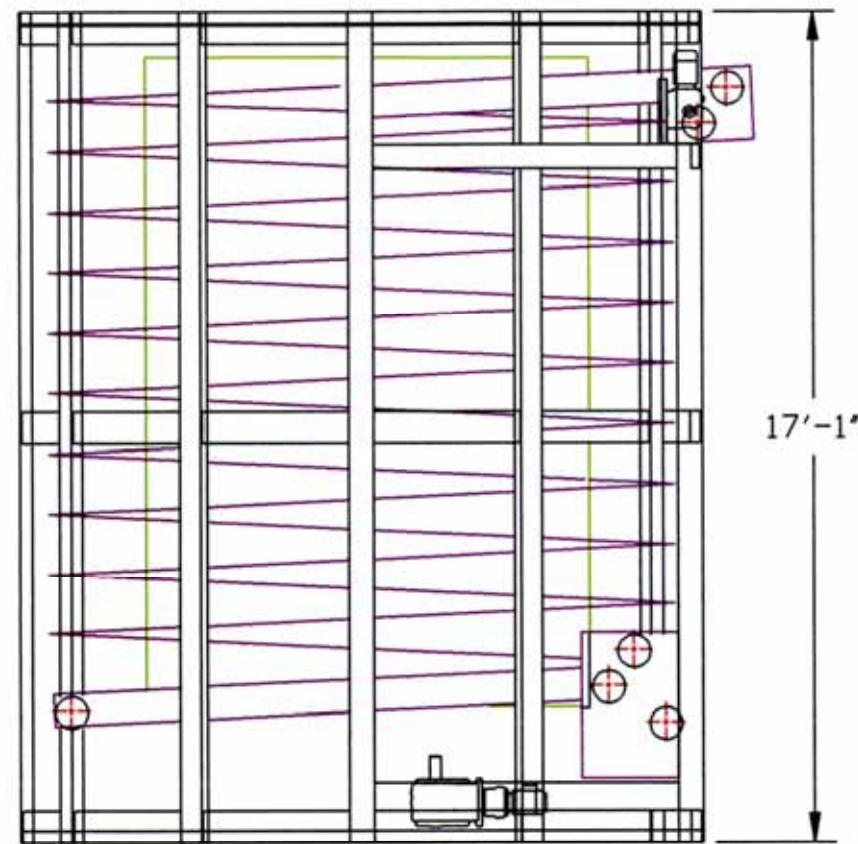
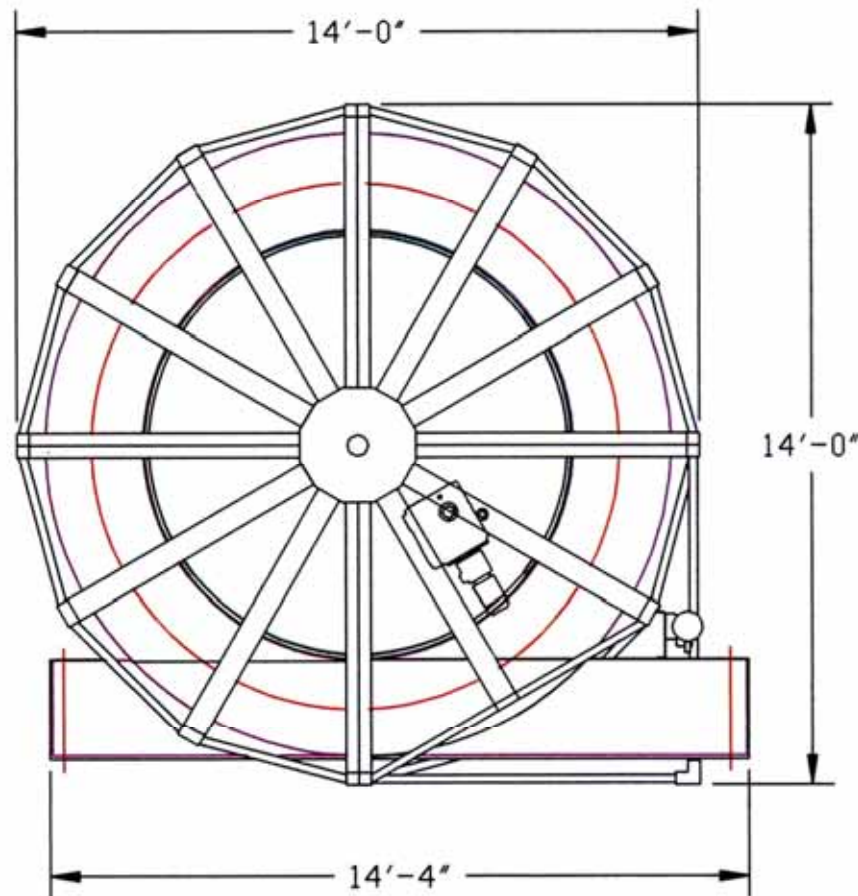


THE LATEST ADDITION TO OUR EVER EXPANDING PRODUCT LINE, THE **MODEL 2200 SPIRAL MASS CONVEYER** OFFERS MANY ADVANTAGES OVER THE TYPICAL MASS ELEVATORS & CONVEYERS NOW ON THE MARKET. A MAXIMUM AMOUNT OF PRODUCT STORAGE IN VERY LITTLE FLOOR SPACE, MINIMAL ELECTRICAL REQUIREMENTS AND SMOOTHNESS OF OPERATION ARE SOME OF THE BETTER FEATURES.

THE **MODEL 2200 SPIRAL CONVEYOR** WAS DESIGNED WITH THREE DIFFERENT MAIN USES IN MIND. FIRST WAS TO PROVIDE A SPECIFIC TIME SPAN FOR A PRODUCT IN AN CONTROLLED ENVIRONMENT (INSIDE A FREEZER BOX, FOR EXAMPLE). SECOND WAS TO OFFER A LOT OF ACCUMULATION IN A SMALL AREA. THIRD WAS TO GIVE AN ALTERNATIVE TO A MASS ELEVATOR THAT WILL ELIMINATE THE DRAWBACKS INHERENT TO PRODUCTS NOW AVAILABLE, SUCH AS THE NOISE, AIR CONTAMINATION AND THE ELECTRICAL NEEDS OF A VACUUM DRIVEN UNIT.

THE UNIT IS TYPICALLY PROVIDED WITH TWO FOOT WIDE SIDE FLEXING PLASTIC CONVEYOR BELTING, EITHER IN A FLAT OR RAISED RIB SURFACE. THE BELTING CAN BE REVERSED, THUS DOUBLING THE WEAR LIFE. THE STANDARD INCLINE HAS SIXTY-FIVE SQUARE FEET OF STORAGE PER LAYER AND THE UNIT CAN HAVE UP TO TWELVE LAYERS, ALLOWING ALMOST 800 SQUARE FEET OF CONVEYOR CHAIN THAT TAKES UP ONLY 200 SQUARE FEET OF FLOOR SPACE. THE INFEED HEIGHT RANGES FROM 24" TO 54", THE OUTLET HEIGHT IS CONTROLLED BY THE NUMBER OF LAYERS AND THE INFEED HEIGHT.





## MODEL 2200 SPIRAL MASS CONVEYOR

### STANDARD SPECIFICATIONS:

**CONSTRUCTION:** FORMED 7 AND 11 GAGE MODULAR MILD OR STAINLESS STEEL. THE DRUM IS MADE OF 1/4" PLATE WITH A 14 GAGE STAINLESS STEEL OUTER SURFACE.

**CONVEYOR CHAIN:** SERIES 2200 SIDE-FLEX SMOOTH TOP OR RAISED RIB PLASTIC MAT BY 24" WIDE (OTHER WIDTHS AVAILABLE). THE CHAIN CAN BE REVERSED FOR TWICE THE WEAR LIFE. THE CHAIN HAS A THREE FOOT LONG GRAVITY TAKE UP SYSTEM.

**WEAR STRIPS:** EXTRUDED UHMW SNAP ON WITH RETAINER CLIPS ON THE ENDS.

**DRIVE PARTS:** 1 HP RIGHT ANGLE EURO-DRIVE GEARMOTOR ON CONVEYOR WITH NO. 60 ROLLER CHAIN DRIVE PARTS. 1 HP TO 2 HP EURODRIVE GEARMOTOR ON THE DRUM, WITH NO. 80 ROLLER CHAIN DRIVE PARTS. THE BELT SPEED CAN RANGE FROM 5 FPM TO 80 FPM, DEPENDING ON YOUR REQUIREMENTS.

**DIMENSIONS:** THE BELT HAS A CENTER-LINE DIAMETER OF 8'-10", AND CAN INCLINE FROM 9" TO 18" PER LAYER, (MAXIMUM PRODUCT HEIGHT IS 14" TALL). LAYERS CAN VARY FROM 1 TO 12. THE INFEED HEIGHT RANGES FROM 24" TO 54" AND THE DISCHARGE HEIGHT IS CONTROLLED BY THE INFEED HEIGHT AND AMOUNT OF LAYERS. THE UNIT BREAKS DOWN INTO SECTIONS THAT ALLOW IT TO BE SHIPPED CONVENTIONALLY.

### OPTIONAL EQUIPMENT:

THE UNIT CAN BE PROVIDED WITH UHMW COVERED INNER RAILS NEXT TO THE DRUM TO AVOID PRODUCT MARKING WHEN THE UNIT IS USED FOR ACCUMULATION.

ALL GREASE POINTS CAN BE LOCATED IN A CENTRALLY LOCATED MANIFOLD.

THE UNIT CAN BE PROVIDED WITH A NEMA STANDARD CONTROL PANEL, PRE-PIPED, TESTED AND READY FOR OPERATION.